



**XINGRAIL**

# 3222/17/44

info@cranerailclips.com

Suzhou Xinggui Gugong Railway Fastening Technology Co., Ltd.



## SPECIFICATIONS:

MAX SIDE LOAD **290kN**

**17 mm** HORIZONTAL RAILADJUSTMENT

## DIMENSIONS (mm):

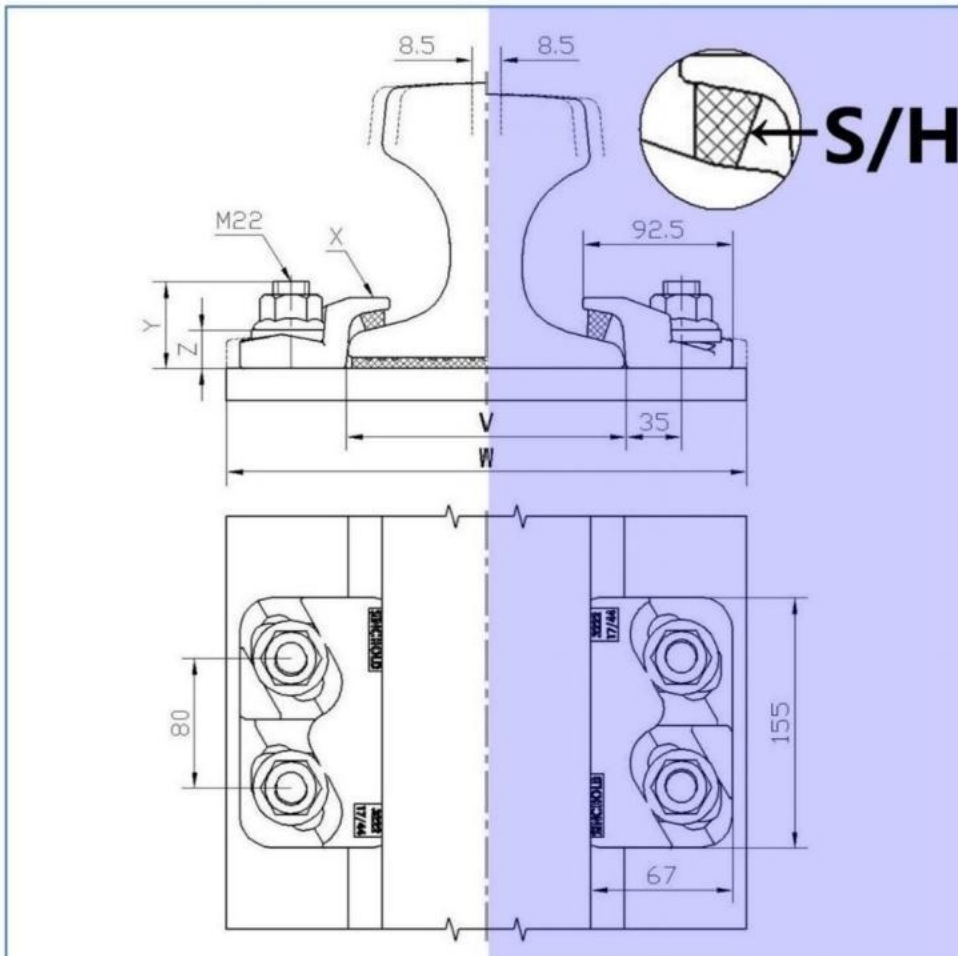
REF NO.	X	Y FULL NUT	Y THINNUT	Z	WEIGHTP kg
3222/17/44	44	45	40	24	1.87
<b>S (rubber)</b>	RAIL WITH PAD PLAN				<b>14mm</b>
<b>H (rubber)</b>	RAIL WITHOUT PAD PLAN				<b>21mm</b>

## XINGRAIL 3222/17/44

Adjustable crane rail clip is designed to fix heavy rails in the most arduous applications. It can withstand a horizontal from the rail of **290kN(29.2 tonnes)**. Its low profile allows it to be used with cranes that are fitted with guide rollers.

### 1:RAIL WITH PAD

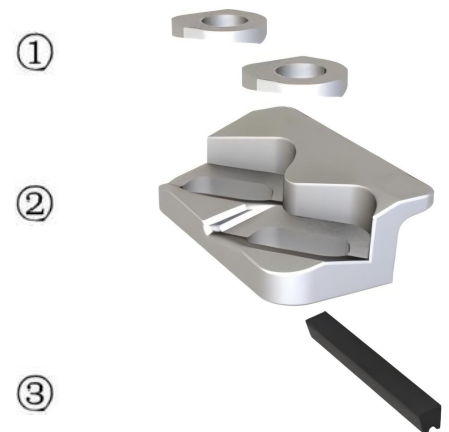
### 2:RAIL WITHOUT PAD



## FEATURES

- The proved design has been used successfully for many years throughout the world.
- The clip is welded to the rail support.
- The two main parts are locked together on tightening the nut.
- A special vulcanized rubber block applies a controlled force to the rail.

## COMPONENTS



1. Special washer
2. Forging steel clip
3. Vulcanized rubber block

Minimum assembly width -W= Rail width (F)+151 mm


**XINGRAIL 3222/17/44**



# XINGRAIL

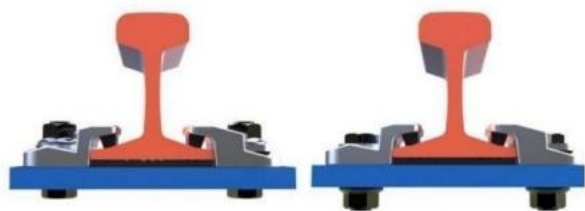
# 3222/17/44

Suzhou Xinggui Gugong Railway Fastening Technology Co., Ltd.

	F mm	C mm	A mm	RAIL WEIGHT (kg/m)	1.CLIP REFERENCE FOR RAIL WITH PAD	2.CLIP REFERENCE FOR RAIL WITHOUT PAD
QU 70	120	70	120	52.8	3222/17/44 (S)	3222/17/44 (H)
QU 80	130	80	130	63.69	3222/17/44 (S)	3222/17/44 (H)
QU100	150	100	150	89	3222/17/44 (S)	3222/17/44 (H)
QU120	170	120	170	118.5	3222/17/44 (S)	3222/17/44 (H)
P50	132	70	152	51.514	3222/17/44 (S)	3222/17/44 (H)
P60	150	73	176	61	3222/17/44 (S)	3222/17/44 (H)
UIC54	140	70	159	54.43	3222/17/44 (S)	3222/17/44 (H)
UIC60	150	72	172	60.21	3222/17/44 (S)	3222/17/44 (H)
56 E1	140	70	159	56.27	3222/17/44 (S)	3222/17/44 (H)
A100	200	100	95	74.3	3222/17/44 (S)	3222/17/44 (H)
A120	220	120	105	100	3222/17/44 (S)	3222/17/44 (H)
A150	220	150	150	150.3	3222/17/44 (S)	3222/17/44 (H)
ISCR 80	130	82	130	64.4	3222/17/44 (S)	3222/17/44 (H)

This clip can be used for a wider selection of rails than illustrated. Please contact XINGRAIL for the full range of possible rails. All rails can be fastened with bolted or welded base clips. XINGRAIL may change or improve their products and also alter specifications without notice.

## BOLT CONFIGURATIONS:



## INSTALLATION INSTRUCTIONS:

The hexagon headed fixing bolt can be inserted from above or below the supporting structure-see adjacent configurations.

If it is desired to fix the clip with a welded stud, this may be possible. Please consult **XINGRAIL** for guidance.

### TIGHTENING TORQUE

Grade 8.8 bolt 550Nm  
Grade 10.9 bolt 750Nm

Please contact **XINGRAIL** for full installation instructions.

**Suzhou Xinggui Gugong Railway Fastening Technology Co., Ltd.**

Tel: 8615962347500

Tel: 8618796837477

E-mail: [info@cranerailclips.com](mailto:info@cranerailclips.com)

Add: Zhangjiagang Hezhong Metal Products Co. 649 Yangjin Highway,  
Zhangjiagang City, Suzhou, Jiangsu Province, China



# XINGRAIL

# XINGRAIL

# 3222/17/44