

Suzhou Xinggui Gugong Railway Fastening Technology Co., Ltd.

## SPECIFICATIONS:

MAX SIDE LOAD **390 kN**

**20 mm** HORIZONTAL RAIL ADJUSTMENT

## DIMENSIONS (mm):

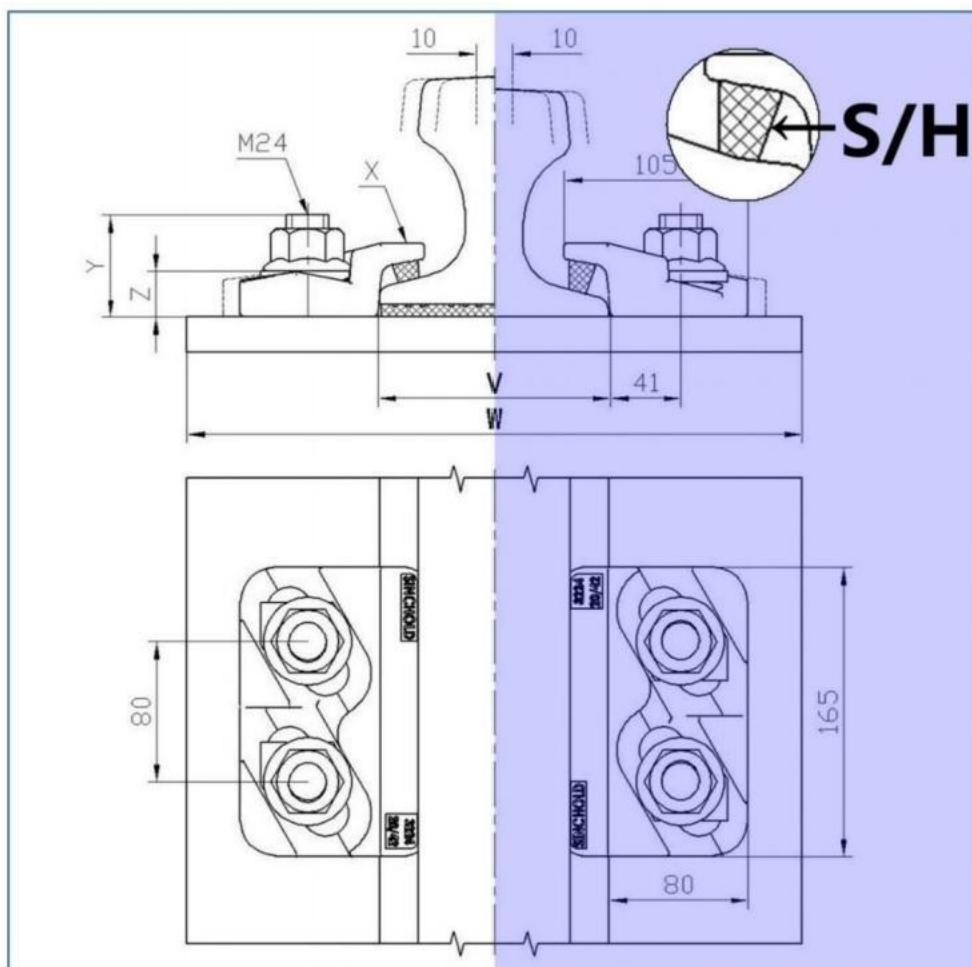
REF NO.	X	Y FULL NUT	Y THIN NUT	Z	WEIGHTP kg
3224/20/44	44	48	43	26	2.5
S(rubber)	RAIL WITH PAD PLAN			14mm	
H(rubber)	RAIL WITHOUT PAD PLAN			21mm	

## XINGRAIL 3224/20/44

Adjustable crane rail clip is designed to fix heavy rails in the most arduous applications. It can withstand a horizontal from the rail of **390kN(39.2tonnes)**. Its low profile allows it to be used with cranes that are fitted with guide rollers.

### 1:RAIL WITH PAD

### 2:RAIL WITHOUT PAD

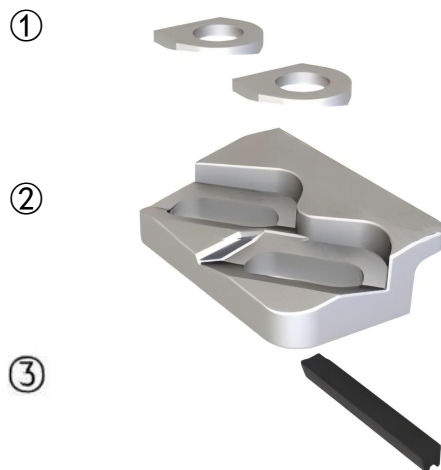


Minimum assembly width-W=Rail width (F)+180 mm

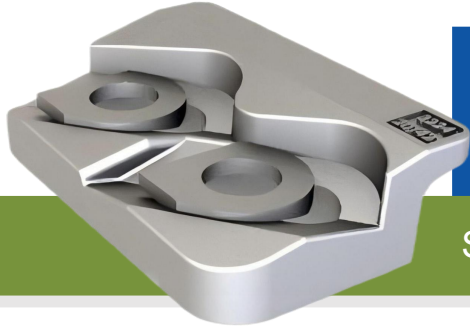
## FEATURES

- The provedesign has been used successfully for many years throughout the world.
- The clip is welded to the rail support.
- The two main parts are locked together on tightening the nut.
- A special vulcanized rubber block applies a controlled force to the rail.

## COMPONENTS




- 1.Special washer
- 2.Forging steel clip
- 3.Vulcanized rubber block



# XINGRAIL

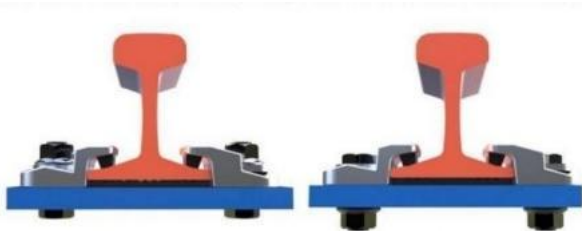
# 3224/20/44

Suzhou Xinggui Gugong Railway Fastening Technology Co., Ltd.

	F mm	C mm	A mm	RAIL WEIGHT (kg/m)	1. CLIP REFERENCE FOR RAIL WITH PAD	2. CLIP REFERENCE FOR RAIL WITHOUT PAD
QU 100	150	100	150	89	3224/20/44 (S)	3224/20/44 (H)
QU 120	170	120	170	118.5	3224/20/44 (S)	3224/20/44 (H)
A120	220	120	105	100	3224/20/44 (S)	3224/20/44 (H)
A150	220	150	150	150.3	3224/20/44 (S)	3224/20/44 (H)
ISCR 100	150	102	150	89	3224/20/44 (S)	3224/20/44 (H)
ISCR 120	170	120	170	118.5	3224/20/44 (S)	3224/20/44 (H)
ISCR 140	170	140	170	146	3224/20/44 (S)	3224/20/44 (H)
CR 73	140	100	135	73.3	3224/20/44 (S)	3224/20/44 (H)
86kg AS	165	102	102	85.5	3224/20/44 (S)	3224/20/44 (H)
MRS 86	165	102	102	85.5	3224/20/44 (S)	3224/20/44 (H)
MRS 87 (PRI85R)	152	102	152	86.8	3224/20/44 (S)	3224/20/44 (H)
MRS 125	180	120	180	125	3224/20/44 (S)	3224/20/44 (H)

This clip can be used for a wider selection of rails than illustrated. Please contact **XINGRAIL** for the full range of possible rails. All rails can be fastened with bolted or welded base clips. **XINGRAIL** may change or improve their products and also alter specifications without notice.

#### BOLT CONFIGURATIONS:



#### INSTALLATION INSTRUCTIONS:

The hexagon headed fixing bolt can be inserted from above or below the supporting structure-see adjacent configurations.

If it is desired to fix the clip with a welded stud, this may be possible. Please consult **XINGRAIL** for guidance.

#### TIGHTENING TORQUE

Grade 8.8 bolt 650Nm

Grade 10.9 bolt 950Nm

Please contact **XINGRAIL** for full installation instructions.

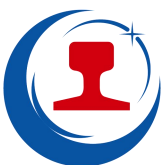
**Suzhou Xinggui Gugong Railway Fastening Technology Co., Ltd.**

Tel: 8615962347500

Tel: 8618796837477

E-mail: [info@cranerailclips.com](mailto:info@cranerailclips.com)

Add: Zhangjiagang Hezhong Metal Products Co. 649 Yangjin Highway, Zhangjiagang City, Suzhou, Jiangsu Province, China



## XINGRAIL

## XINGRAIL

## 3224/20/44